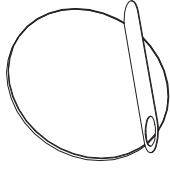


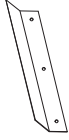
HALO mirror assembly instructions

You are the lucky owner of the HALO BUJNIE mirror. Here we will show you how to install it in several points.

1. Elements you will find in the mirror packaging



mirror HALO

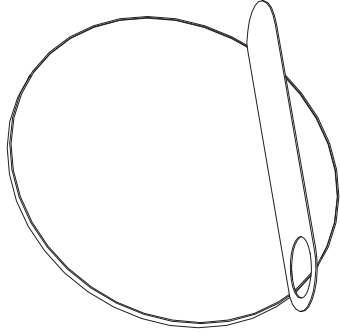


steel strip attaching the mirror to the wall

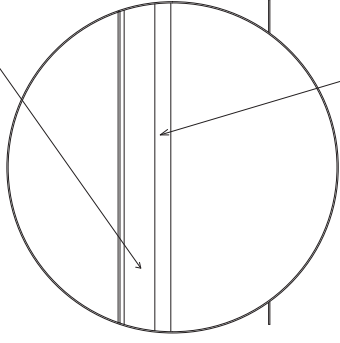


3 pcs of screws to attach the mirror to the wall

2. Familiarize yourself with the details of attaching the mirror:

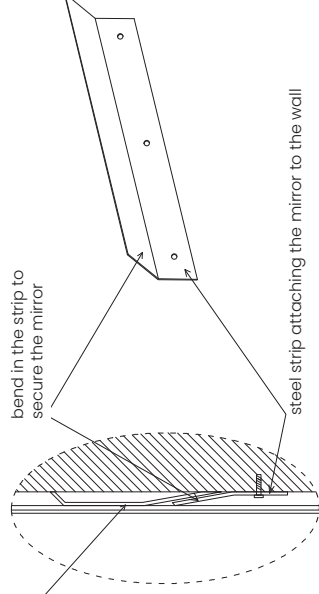


Front of the mirror



Back of the Mirror

structural element of the mirror



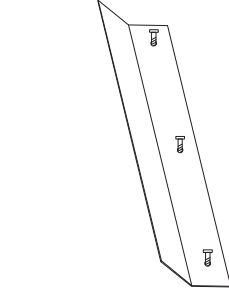
bend in the strip to secure the mirror

steel strip attaching the mirror to the wall

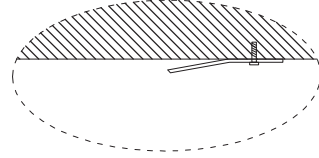
Attaching detail

fragment bent - attaching the mirror to the wall

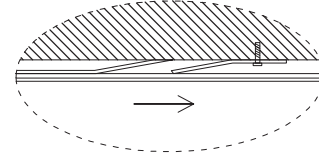
3. Instructions for attaching the mirror to the wall:



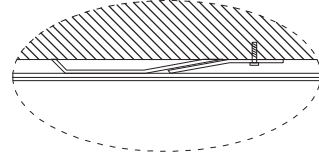
A)



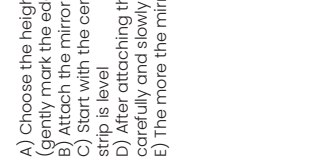
B)



C)



D)



E)

- A) Choose the height at which you want the mirror to be (gently mark the edges of the 80 cm wide frame)
- B) Attach the mirror mounting strip using the included screws
- C) Start with the center screw, don't forget to level the strip - make sure the strip is level
- D) After attaching the strip to the wall, slide the mirror onto the strip - carefully and slowly
- E) The more the mirror is inserted into the strip, the closer it will be to the wall